



# Working with the Remote Desktop Environment & AppsAnywhere at the Faculty of Economics and Social Sciences

Last updated: March 12, 2024

**At the Faculty of Economics and Social Sciences, there are two options available for remote work with university resources:**

1. A **Remote Desktop Environment** implemented with **Parallels RAS**, where you work on a full desktop on a server located at the university,
2. A software called **AppsAnywhere**, where, in the case of a Windows PC/Notebook, you work with apps provided to you on your PC/Laptop.  
If you're using a different operating system such as MacOS or a Linux distribution, the app won't start on your computer as it would under Windows, but will be executed as a RemoteApp.

Currently, you do not need the VPN Cisco Secure Client-AnyConnect for the Remote Desktop Environment, if you want to use **EViews, MAXQDA or SPSS** through AppsAnywhere, the connection through the VPN is a necessity ([Instructions](#)).

However, we recommend that you always establish a VPN connection before working with university services. Furthermore, we reserve the right to secure access behind a VPN again in the future for security reasons.

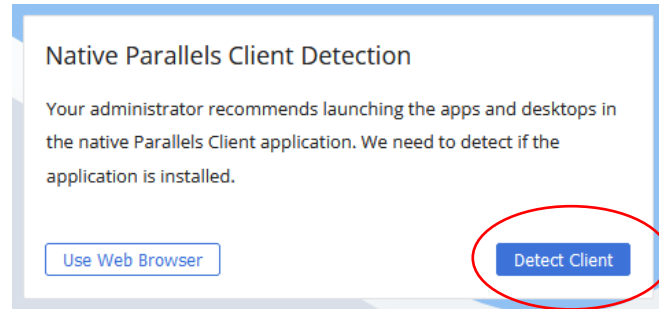


## The Remote Desktop Environment

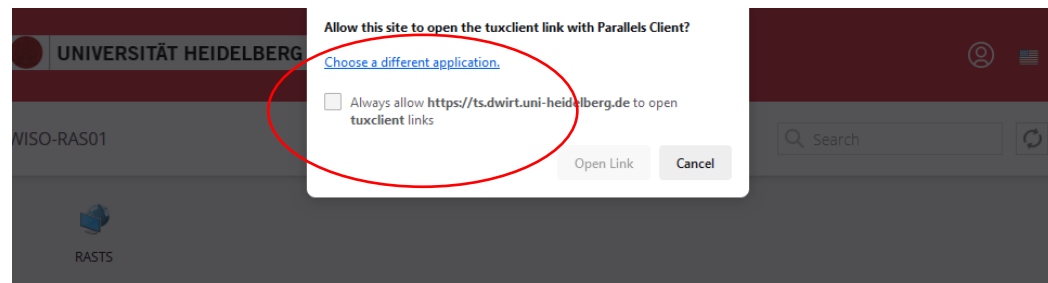
1. Open the website <https://ts.dwirt.uni-heidelberg.de> using a web browser of your choice.
2. Please enter your Uni-ID in the format **ab123@ad**.
3. We strongly recommend accepting the session cookie, as shown in the screenshot below.

A screenshot of the WISO-RAS portal interface. At the top, a red navigation bar contains the text 'UNIVERSITÄT HEIDELBERG | ZUKUNFT SEIT 1386 | WISO-RAS' and a globe icon. Below the navigation bar, a blue and white abstract graphic is visible. On the right side, a cookie notice is displayed, stating: 'This portal uses cookies to ensure the best possible user experience. To find out more, please review our [Cookie and Tracking Tool Notice](#).', with 'Cookie Settings' and 'Accept Cookies' buttons. A red circle highlights this notice. In the center, a 'Native Parallels Client Detection' dialog box is shown, with the text: 'Your administrator recommends launching the apps and desktops in the native Parallels Client application. We need to detect if the application is installed.', and 'Use Web Browser' and 'Detect Client' buttons.

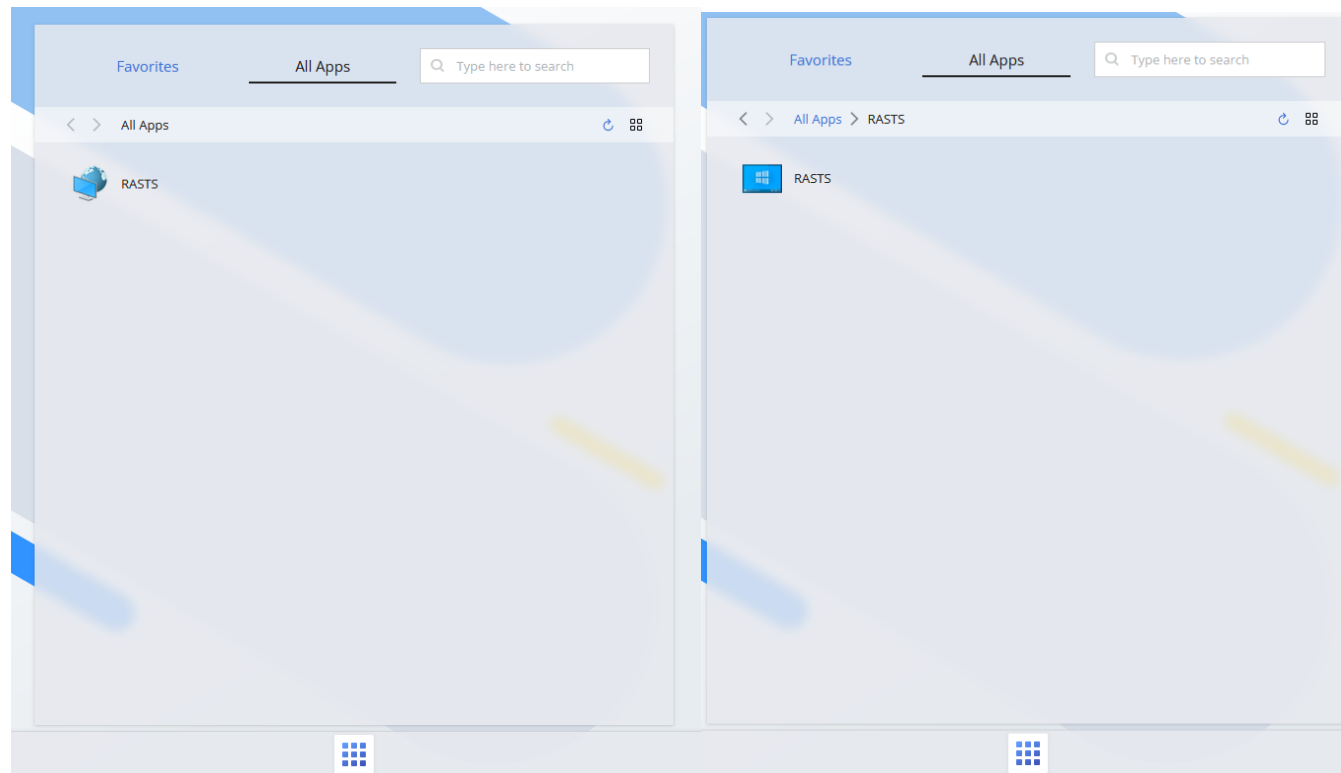
4. After you've logged in successfully, you'll be shown the following message:



5. Please click **“Detect Client”**. If the client is already installed on your machine, please proceed with step 7. If you don't want to install a client and use the less comfortable web interface, you may select **“Use Web Browser”** instead of **“Detect client”**. If you choose not to install the Parallels RAS Client, access will only be available through the web browser and HTML5, which offers less convenience.
6. If you've selected **“Detect client”** and the client is not installed on your machine, please click on **“Install Client”** after the detection process and execute the downloaded **“ClientDownloader.exe”** to install it. After the installation of the client is finished, please click **“Try again”** and proceed with step 7.
7. If the Client is installed on your machine, your browser will ask you to open the link with the Parallels Client. Please select the checkbox next to **“Always allow...”** to make sure the link opens through Parallels in the future.



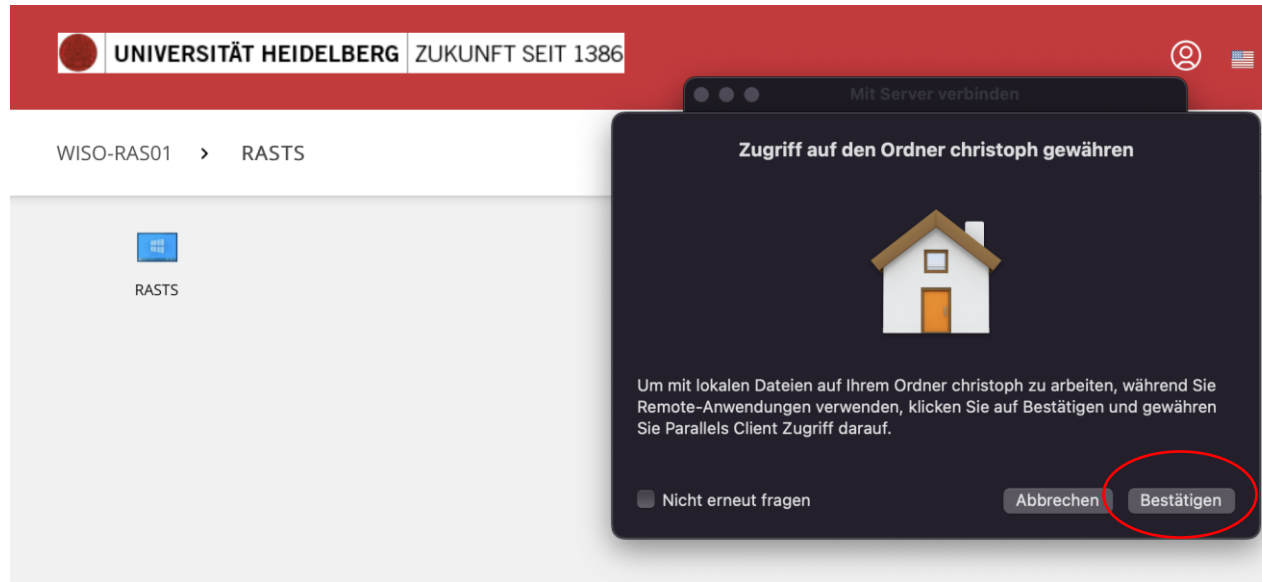
8. After that, you will see the following interface (left screenshot). Click on the group RASTS and then on the actual server RASTS (right screenshot).



9. If the server does not open and you are a participant in a course, please provide your Uni-ID to your supervisor so they can forward it **collectively** to [edv@wiso.uni-heidelberg.de](mailto:edv@wiso.uni-heidelberg.de). Otherwise, contact the specified e-mail address directly.
10. A RDP client, as it has been used before, is no longer necessary and will not work anymore. Access is now only available through a web browser and with the Parallels RAS Client.



11. For MacOS, there are additional points to consider, which also apply to AppsAnywhere on MacOS. To access your data on your PC/Laptop, you must select a folder through which data exchange occurs in MacOS. If you use your entire user folder, you should have access to everything you need.





UNIVERSITÄT HEIDELBERG ZUKUNFT SEIT 1386

WISO-RAS01 > RASTS

Mit Server verbinden

christoph

Name	Größe	Art	Hinzugefügt am
> Applications	--	Ordner	12.05.22, 11:01
> Downloads	--	Ordner	13.11.21, 00:59
> Filme	--	Ordner	13.11.21, 00:59
> Öffentlich	--	Ordner	13.11.21, 00:59
> Library	--	Ordner	13.11.21, 00:59
> Schreibtisch	--	Ordner	13.11.21, 00:59
> Bilder	--	Ordner	13.11.21, 00:59
> SeaDrive	--	Ordner	13.11.21, 00:59
> Musik	--	Ordner	13.11.21, 00:59
> Dokumente	--	Ordner	--

Abbrechen Öffnen

UNIVERSITÄT HEIDELBERG ZUKUNFT SEIT 1386

WISO-RAS01 > RASTS

Mit Server verbinden

Ihr Ordner Dokumente ist nun in Ihren Anwendungen verfügbar

Zu finden im File Explorer unter „Dieser PC“ – „Laufwerke auf ...“

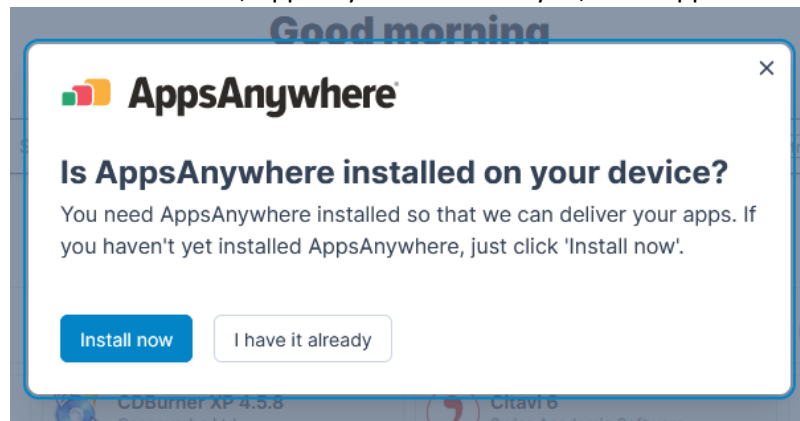
Um Zugriff auf mehr Ordner zu gewähren, gehen Sie zu:  
[Verbindungseigenschaften > Lokale Ressourcen > Laufwerke > Konfigurieren ...](#)

Fertig



## Access through AppsAnywhere

1. Open the website <https://appsanywhere.dwirt.uni-heidelberg.de> with a browser of your choice.
2. Please enter your Uni-ID as username and the corresponding password.
3. The default language is English and can be easily changed according to your needs.
4. In the next window, AppsAnywhere will ask you, if the application is already installed on your computer. Please click the button, that fits your needs.




All important information and the guidance through the first setup on a Windows PC are shown in this video: <https://youtu.be/yQkYmttEKP4>.

The procedure explained is only valid for Windows. It's similar for MacOS and a Linux distribution: The AppsAnywhere system will guide you through the necessary steps of the setup.

Unfortunately, the manufacturer hasn't released explanatory videos for MacOs or Linux yet. If he does, we will include those in a new version of this guide.

5. Currently, up to 41 apps are available through AppsAnywhere. This number might vary depending on your permissions (see screenshots on the next pages).



← → ↻  <https://appsanywhere.dwirt.uni-heidelberg.de/login>



LANGUAGE

Default - English (United Kingdom) ▼

USERNAME \*

\_\_\_\_\_

PASSWORD \*

\_\_\_\_\_ 

Sign in





